

NORTH

**REFERENCE(S):**

USGS TOPOGRAPHIC MAP/ ARCGIS MAP SERVICE:  
HTTP://GOTO.ARCGISONLINE.COM/MAPS/  
USA\_TOPO\_MAP, ACCESSED 2/23/2022

USGS 7.5 MINUTE TOPOGRAPHIC MAP:  
WILMINGTON, OHIO QUADRANGLE  
PUBLISHED 1976

Approximate Site  
Location  
(39.4068,  
-83.7908)

**LEGEND**

 Approximate Site Boundary

SCALE IN FEET

0 750 1,500 3,000

APPROXIMATE SITE LOCATION



**Civil & Environmental Consultants, Inc.**

250 Old Wilson Bridge Road, Suite 250 - Worthington, OH 43085

614-540-6633 · 888-598-6808

www.cecinc.com

SCP LITTLE MIAMI, LLC  
LITTLE MIAMI MITIGATION BANK  
CLINTON COUNTY, OHIO

**SITE LOCATION MAP**

DRAWN BY:

MAK/WSG

CHECKED BY:

HKF

APPROVED BY:

BJP\*

FIGURE NO:

**SHEET 1**

DATE:

2/10/2022

SCALE:

1" = 1,500'

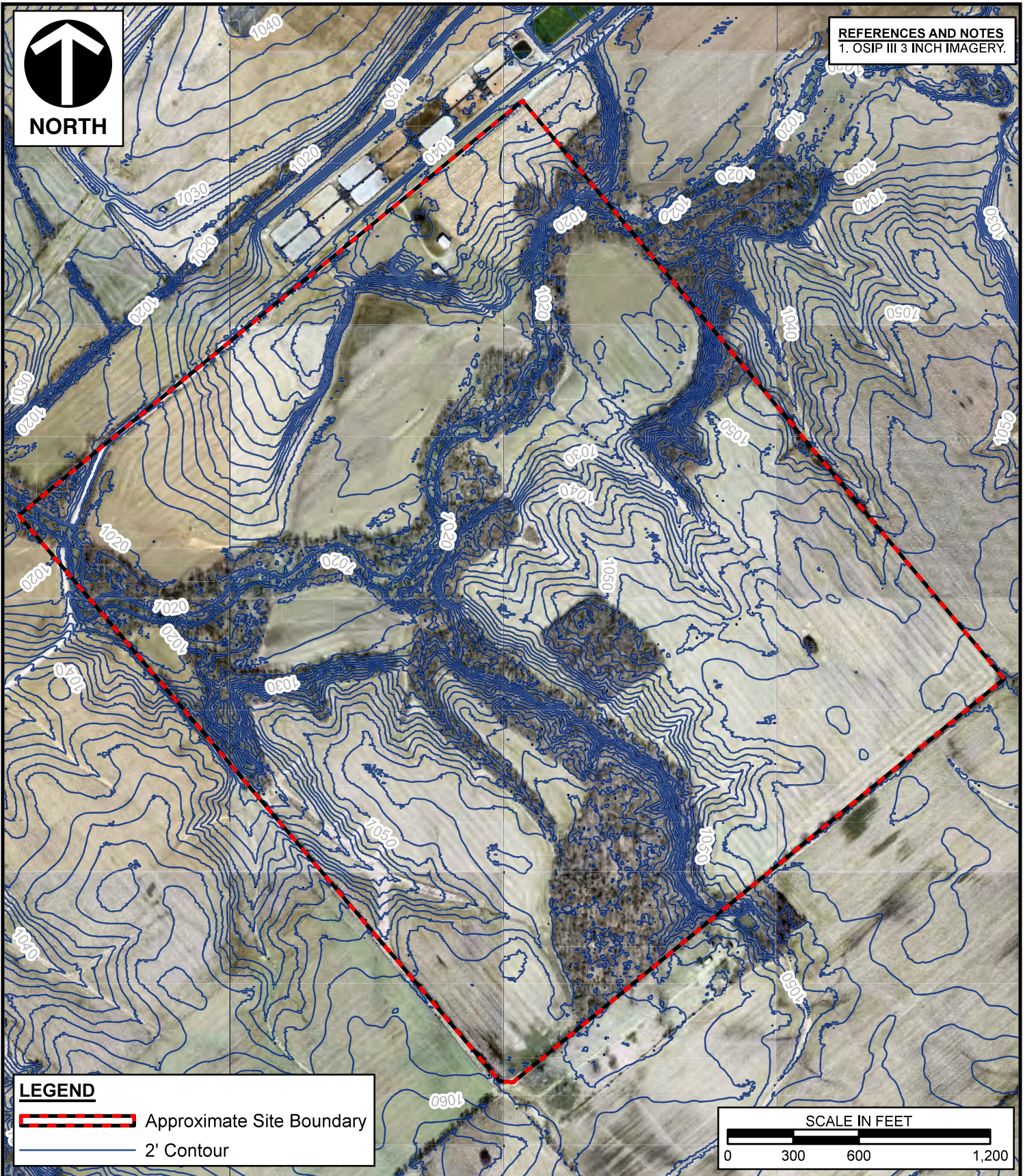
PROJECT NO:

317-792



\*Hand Signature on file



**REFERENCES AND NOTES**  
1. OSIP III 3 INCH IMAGERY.



**LEGEND**

-  Approximate Site Boundary
-  2' Contour



**Civil & Environmental Consultants, Inc.**

250 Old Wilson Bridge Road, Suite 250 - Worthington, OH 43085

614-540-6633 · 888-598-6808

www.cecinc.com

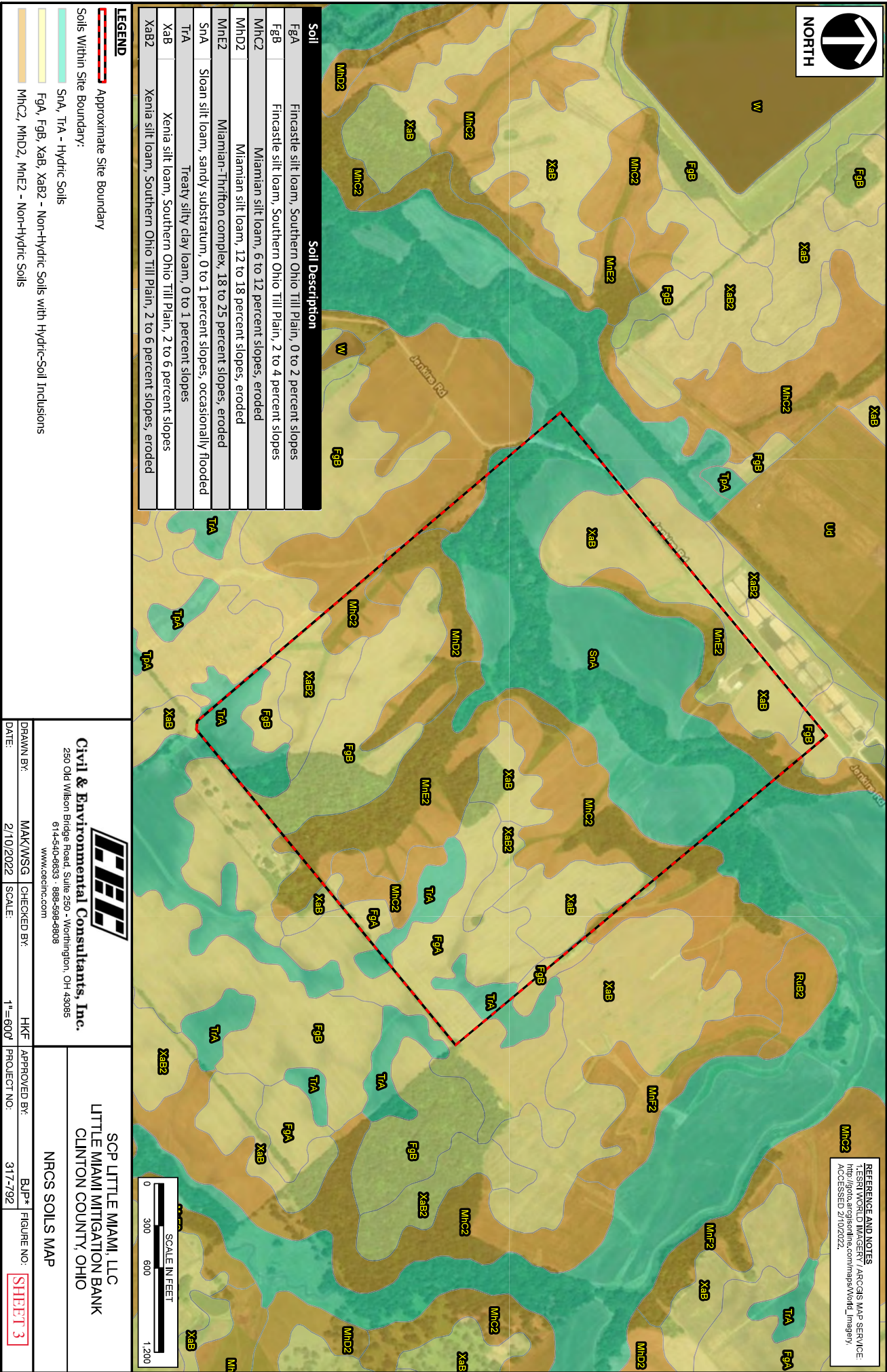
SCP LITTLE MIAMI, LLC  
LITTLE MIAMI MITIGATION BANK  
CLINTON COUNTY, OHIO

**AERIAL MAP**

DRAWN BY:	MAK/WSG	CHECKED BY:	HKF	APPROVED BY:	BJP*	FIGURE NO:	<b>SHEET 2</b>
DATE:	2/10/2022	SCALE:	1"=600'	PROJECT NO:	317-792		

\*Hand Signature on file





**Civil & Environmental Consultants, Inc.**  
250 Old Wilson Bridge Road, Suite 250 - Worthington, OH 43085  
614-540-6633 - 888-558-4808  
www.cecinc.com

SCP LITTLE MIAMI, LLC  
LITTLE MIAMI MITIGATION BANK  
CLINTON COUNTY, OHIO

DRAWN BY: MAK/MSG | CHECKED BY: HKF | APPROVED BY: BJP\* | FIGURE NO: **SHEET 3**

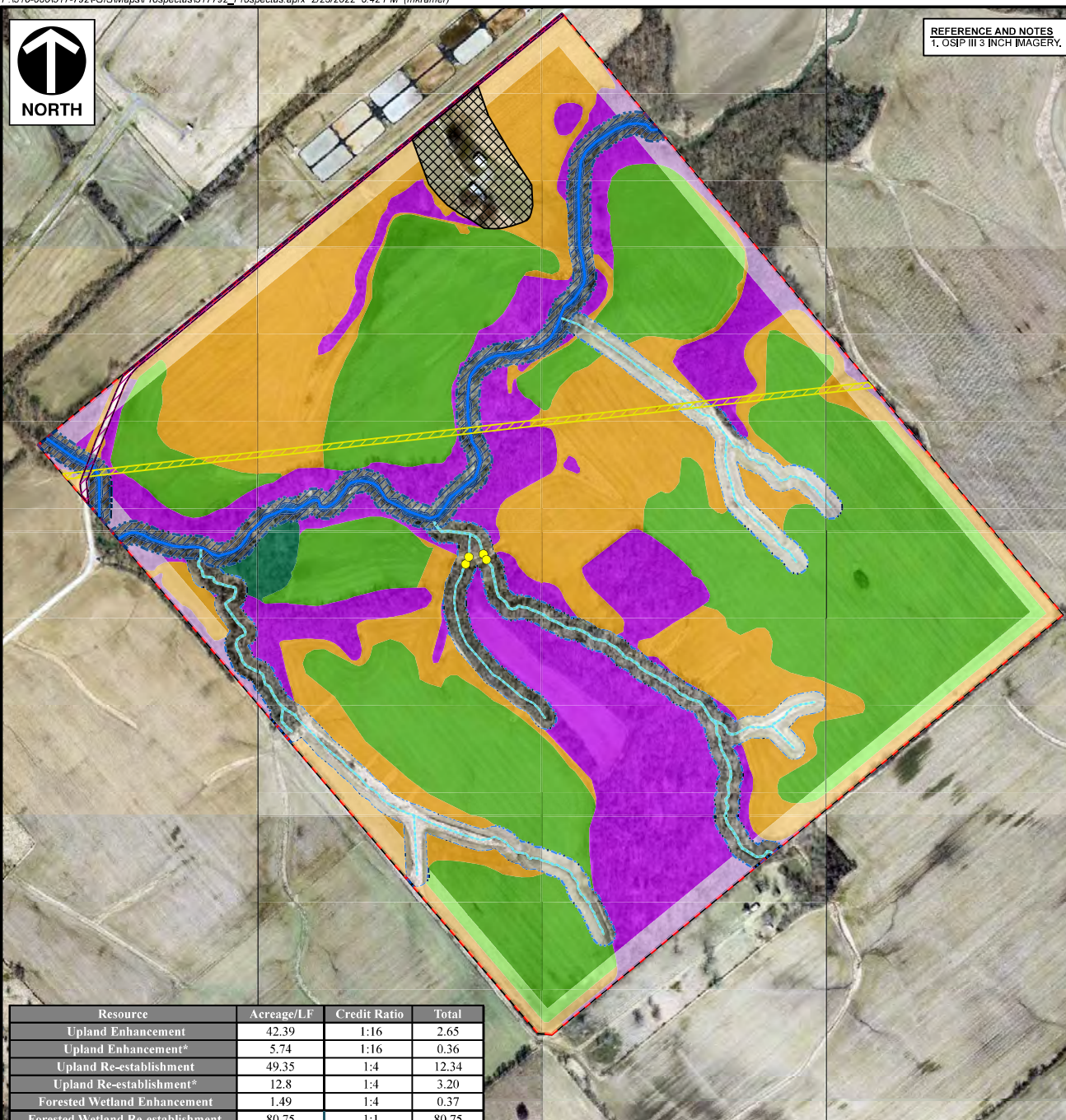
DATE: 2/10/2022 | SCALE: 1"=600' | PROJECT NO: 317-792

NRCS SOILS MAP





REFERENCE AND NOTES  
1. OSP III 3 INCH IMAGERY.



Resource	Acreage/LF	Credit Ratio	Total
Upland Enhancement	42.39	1:16	2.65
Upland Enhancement*	5.74	1:16	0.36
Upland Re-establishment	49.35	1:4	12.34
Upland Re-establishment*	12.8	1:4	3.20
Forested Wetland Enhancement	1.49	1:4	0.37
Forested Wetland Re-establishment	80.75	1:1	80.75
Forested Wetland Re-establishment*	5.04	1:2	2.52
<b>Total Wetland Credits</b>			<b>102.19</b>
<b>Total Wetland Credits (Rounded)</b>			<b>102</b>
Tributary Mitigation Type I Activity Level 1 (LF)	9,384	2:1	18,768
Tributary Mitigation Type I Activity Level 1 (AC)	10.12	-	-
Cowan Creek Mitigation Type 3 Rehabilitation (LF)	4,458	1:4	1,115
Cowan Creek Mitigation Type 1 Activity Level 4 (AC)	20.91	-	-
<b>Total Stream Credits</b>			<b>19,883</b>
<b>Easements and Other (Acres)</b>			
Electrical Easement	2.05		
Road Easement	0.9		
Monitoring Access	4.45		
<b>Total Feature Area</b>	<b>233.95</b>		

\*For areas within 100 feet of property boundary or unprotected land.

\*\*Portion of Electrical Easement not in Road ROW encompasses proposed wetland and upland habitat. Those areas are included in the credit calculation.

#### LEGEND

- Approximate Site Boundary
- Cowan Creek
- Unnamed Tributary (UNT)
- Cowan Creek - Mitigation Type 3 Rehabilitation
- UNT Mitigation Type 1 Activity 1
- Forested Wetland Enhancement
- Forested Wetland Re-establishment
- Forested Wetland Re-establishment Within 100' of Site Boundary
- Upland Enhancement
- Upland Enhancement Within 100' of Site Boundary
- Upland Re-establishment
- Upland Re-establishment Within 100' of Site Boundary
- 25' Electric Easement
- Existing Road
- Monitoring and Maintenance Access
- Unnamed Tributary Centerline
- Cowan Creek Centerline
- Existing Culvert

SCALE IN FEET  
0 225 450 900

**C&E**  
**Civil & Environmental Consultants, Inc.**  
250 Old Wilson Bridge Road, Suite 250 - Worthington, OH 43085  
614-540-6633 · 888-598-6808  
www.cecinc.com

SCP LITTLE MIAMI, LLC  
LITTLE MIAMI MITIGATION BANK  
CLINTON COUNTY, OHIO

#### MITIGATION CONCEPT MAP

DRAWN BY: WSG	CHECKED BY: HKF	APPROVED BY: BJP*	FIGURE NO: <b>SHEET 4</b>
DATE: 2/25/2022	SCALE: 1"=450'	PROJECT NO: 317-792	

\*Hand signature on file